

**RK ROBERTSON
40th INTERCLUB
CHALLENGE SERIES**

SAILING INSTRUCTIONS

2017 - 2018

PROUDLY SPONSORED BY:

**R.A.MACKAY
YACHT BROKERAGE**



RK ROBERTSON SAILING INSTRUCTIONS

40th INTERCLUB

CHALLENGE

2017 - 2018

1 Rules

- 1.1 Races will be governed by the 2017 - 2020 Racing Rules of Sailing (RRS) and the prescriptions and Special Regulations of Australian Sailing [AS] contained therein.
- 1.2 The Special Regulations of AS relative to Part 1 Category 7 shall apply to all races and only yachts holding a current Cat 7 Equipment Audit Form shall be eligible to enter.
- 1.3 While it is recognized that these RK Robertson races are club Pointscore races for some competitors, where a contradiction exists between club Sailing Instructions (SI's) and these SI's, then the RK Robertson SI's shall take precedence.

2 Liability

- 2.1 Attention is drawn to Fundamental Rule 4 which states: - "The responsibility for a boats decision to participate in a race or to continue *racing* is hers alone".
- 2.2 It is the yacht owners' responsibility to ensure that they have insurance cover for racing in a series that may use spinnakers, even if they themselves will not be using spinnakers.

3 Changes to the Sailing Instructions (SI's)

- 3.1 A change in the SI's shall be indicated by code flag 'L' flown from the signal mast of each competing club by 11:30 hours on the day of the race or by code flag 'L' being flown from the Race Committee Vessel (RCV) 30 minutes prior to the first warning signal.
- 3.2 Changes will be notified in writing on each club's Noticeboard or verbally by the Race Officer on the RCV.

4 Race Schedule

Race	Date	Host Club	
Race 1	23 rd September 2017	RMYCT	Toronto
Race 2	28 th October 2017	WASC	Wangi
Race 3	25 th November 2017	LMYC	Belmont
Race 4	20 th January 2018	RMYCT	Toronto
Race 5	10 th February 2018	WASC	Wangi
Race 6	17 th March 2018	LMYC	Belmont

5 Starting Times

Divisions	Warning signal	Division Flag
White Division	1325	White
Green Division	1330	Green
Blue Division	1335	Blue

6 Divisions

- 6.1 The RK Robertson handicap committee shall nominate the Division in which competitors are to sail. Competitors shall sail the course nominated for their Division.
- 6.2 Competitors shall carry a coloured pennant conspicuously displayed in their rigging indicating the division in which they are sailing;
- 6.2.1 White pennant Fast spinnaker and non-spinnaker division
 - 6.2.2 Green pennant Spinnaker and non-spinnaker division
 - 6.2.3 Blue pennant Slower spinnaker & non-spinnaker division

7 Race Committee Vessel (RCV)

- 7.1 The RCV shall be the RCV of the LMYC "CALYPSO" and shall bear the LMYC burgee in a prominent position.

8 Changes to be Notified

- 8.1 The following changes shall be notified in writing to the RKR Interclub Committee by 1700 hours on the Thursday prior to race day by:- E-mail to racing@lmyc.com.au or Fax:- 49477696; or post to Racing, PO Box 150, Belmont 2280.
- 8.1.1 Any changes, since the previous RK Robertson race, in the yacht's racing configuration including: - sails, rig modification, ballast or keel changes, propeller changes and/or change of skipper.
 - 8.1.2 **Sail numbers;** incorrect or unreadable sail numbers may make a yacht ineligible for results.
 - 8.1.3 Yachts not previously entered in an RK Robertson race.
- 8.2 **Changes not notified may result in a yacht being protested.**

9 Courses

- 9.1 Courses to be sailed shall be those set out in Appendix A4 pages 10 to 12. For a map showing the approximate location of marks refer to the various host Club web sites and Appendix A2 page 9
- 9.2 An International code flag numeral shall be flown on the RCV prior to the warning signal to indicate the course number to be sailed. [Refer Appendix A3 pages 10 – 12]
- 9.3 White, Green and Blue divisions shall all sail a common course. The elapsed times for this common course multiplied by a yacht's TCF shall be used to determine the RKR Shield results and the divisional results for Green and Blue divisions.
- 9.4 All White division yachts shall continue racing after completing the common course to sail a full course. The results of the full course will be used to determine White divisional results.

10 Marks

- 10.1 The courses and marks to be rounded in each race are described in Appendix A1
- 10.1.1 The LMYC mark named 'Belmont Bay' has been renamed 'Albert Mitchell' abbreviated to 'Albert' in the course descriptions.
 - 10.1.2 Croudace Bay mark is not to be confused with Hartley. Refer to course mark map Appendix A2 page 9
- Caution:** - CARE MUST BE TAKEN TO CORRECTLY IDENTIFY MARKS
- 10.2 In some courses the 'Channel mark' may act as a passing mark rather than a rounding mark. Passing marks need not be looped.
- 10.3 For White Division the Finish mark of LMYC, WASC and RMYCT acts as a rounding mark and a finishing mark only when so designated. [Refer also SI 18.3]

11 Starting Line

- 11.1 The starting line shall be a line between an orange mark bearing Code Flag 'O' atop (starting mark) at the port end and the signal mast on the RCV displaying an Orange flag at the starboard end. A starting limit mark (a spar mark with a red flag atop) may be moored between the RCV and the starting mark. When in position, yachts shall take this starting limit mark on the same hand as the RCV when starting.
- 11.2 After the display of the Preparatory signal for White Division no yacht shall cross the Start Line from the course side of the Start Line.

12 Starting Signals

- 12.1 Starting signals will be in accordance with RRS 26.

Time	Signal		Meaning
13:25 hours	White	↑	Warning White Division
13:26 hours	I	↑	Preparatory White Division
13:29 hours	I	↓	One Minute White Division (Around the end rule applies)
13:30 hours	White	↓	Start White Division
	Green	↑	Warning Green Division
13:31 hours	I	↑	Preparatory Green Division
13:34 hours	I	↓	One Minute Green Division (Around the end rule applies)
13:35 hours	Green	↓	Start Green Division
	Blue	↑	Warning Blue Division
13:36 hours	I	↑	Preparatory Blue Division
13:39 hours	I	↓	One Minute Blue Division (Round the end rule applies)
13:40 hours	Blue	↓	Start Blue Division

- 12.2 Attention may be drawn to the above flag signals by sound signal.

13 Yachts Not Racing to Keep Clear

- 13.1 Attention is drawn to RRS 24 - yachts entered in a race while not racing and after they have finished shall:
- 13.1.1 Keep clear of the starting line, both in front of and behind the line and for a reasonable distance along its extensions.
- 13.1.2 Keep clear of and not hinder yachts which are racing. The onus is upon yachts which are hindered to protest the offenders. The Race Committee may act under RRS 60.2 when it considers a yacht not racing has failed to keep clear and a notation to this effect in the results shall be regarded as the appropriate warning that the yacht must attend the subsequent protesting hearing.

14 Recalls

- 14.1 Recalls shall be in accordance with RRS 29
- 14.2 After any General Recall RRS 30.3 – 'U Flag' rule or RRS 30.4 – 'Black Flag' rule, will be invoked. The sail numbers of yachts breaching RRS 30.3 or 30.4 will be displayed from the RCV; may be displayed from a vessel stationed near the first mark of the course and/or may be announced on radio VHF Ch 71
- 14.3 After a General Recall the start of subsequent divisions will be delayed until a successful start has been made for the division recalled.

15 Shortening Course

- 15.1 The course may be shortened at any rounding mark in accordance with RRS 32.2(a); the definition “Finish” and “Race Signals”

16 Time Limits

- 16.1 The time limit for each Division will be four and a half hours. Yachts not finishing within four and a half hours on elapsed time from the start of its division will be recorded as DNF in the RK Robertson race. (Changes RRS35)

17 Protests

- 17.1 Protests and/or Requests for Redress shall be lodged in the form of RRS 61.2 which may be lodged electronically by E-mail.
- 17.2 Protests shall be lodged at the following clubs (LMYC, RMYCT, or WASC) within 2 hours of the protesting yachts finishing time.
- 17.3 Protests will be heard at the host club at 18:30 hrs on the Tuesday following the RK Robertson race unless advised otherwise by the Protest Committee chairperson.
- 17.4 The Protest Committee shall be comprised of representatives from at least two (2) competing clubs.

18 Finish Line

- 18.1 Finish line for each race shall be as follows:

18.1.1 **Race 1 & 4 Host – RMYCT**

Between the RMYCT Race Committee Box at the end of the marina and the RMYCT club mark [a yellow permanent mark with a RED CROWN atop] moored opposite.

18.1.2 **Race 2 & 5 Host – WASC**

Between the WASC Clubhouse flag mast bearing a blue flag and the WASC club mark [a permanent mark being a lime green cylinder with a black mid girth band] moored approx. 300 m North West of WASC. An orange inflatable buoy may be anchored on this finish line and when in position shall be taken to port when finishing.

18.1.3 **Race 3 & 6 Host - LMYC**

Between the LMYC Race Committee Box [RCB] on the south west corner of the marina and the club mark [a Lime Green permanent mark with a red band and **YELLOW CONE** atop] moored 200m to the west of the LMYC marina RCB. A lime green permanent mark with a red band moored 50m to the west of the RCB shall be taken on the same hand as the RCB when finishing.

- 18.2 Yachts that have finished shall not re-cross the finish line from either direction. **Yachts that do re-cross the finish line shall be penalised an additional two minutes to their elapsed time without a hearing.** (Changes RRS 63.1)
- 18.3 With the exception of White division when the ODM is designated a rounding mark of the course, the finishing line for each race is a prohibited area and yachts shall not sail across a finishing line from either direction unless they are finishing. [Refer also SI 10.3]

19 Restricted areas

- 19.1 All Cardinal navigation marks encountered in any course shall be taken on their safe water side.
- 19.2 All vessel mooring areas are prohibited areas. Yachts shall not sail within 30 metres of permanent moorings or yachts moored thereto and the adjacent shore line.

20 Racing Conditions

- 20.1 Yachts with retractable keels/centreboards shall not raise or lower their keels/centreboards while racing.
- 20.2 Yachts with retractable bow poles shall sail with the pole fully retracted when not in use.
- 20.3 RRS 49.1 is amended to permit the use of non-adjustable devices attached to a yacht's hull to position skipper and crew outboard. The use of trapezes is not permitted except on class yachts where the original design permitted such use e.g., Diamond and Magic 25 class yachts.
- 20.4 The use of electric power for headsail sheeting, halyards and canting keels is permitted (Changes RRS 52)

21 RK Robertson Shield Memorial Trophy Pointscore

- 21.1 An overall handicap result covering all yachts in all divisions will be determined by multiplying each yacht's elapsed time for the common course by its TCF handicap. TCF handicaps for race 1 will be determined by an Interclub Handicapping Committee and will be adjusted from race to race in a manner determined by that Committee.
- 21.2 Based on the overall handicap result, points will be scored by each yacht using the Low Point System (refer RRS Appendix A4 except that A4.2 shall be replaced by A9) Only yachts recorded a finish time shall have their points scored with the exception of SI 21.3.1. All race results shall be used in the Pointscore.
- 21.3 The points scored in the overall results by all the yachts from each Club shall be added together and the average of the points shall be obtained by dividing the total so obtained by the number of yachts from that club which have been scored in accordance with SI 21.2 above except:
 - 21.3.1 If any Club has less than five (5) finishers recorded, points equal to all finishers + 1 will be added to complete the clubs 5 yacht minimum score before averaging.(Changes RRS A9)
- 21.4 A Club's average points over all the races will be totalled and the Club with the lowest total average points will be awarded the RK Robertson Shield Memorial Trophy.
- 21.5 A minimum of three (3) completed races shall constitute a series.
- 21.6 A 'Perpetual Trophy' for best scoring yacht in the Interclub Shield Series will be awarded. Scoring for this trophy will be from the common course finish of the RKR Shield using Appendix A9 with one [1] discard after six [6] races completed. The Trophy has been supplied by RMYCT.

22 Division Pointscores

- 22.1 Racing shall be conducted in three (3) divisions with the results of each division being determined by multiplying the yachts elapsed time for the full course by its TCF handicap. TCF handicaps for race 1 will be determined by the Interclub Handicapping Committee and will be adjusted from race to race in a manner determined by that Committee.
- 22.2 A Pointscore based on the Low Point System (refer RRS Appendix A4 except that A4.2 shall be replaced by A9) will be run on the results of each division over the six races of the series. If six races are completed there will be one discard.
- 22.3 A minimum of three (3) completed races shall constitute a series for a Division.

23 Divisional Prizes

- 23.1 First, Second and Third prizes, supplied by **Whitworths' Marine and Leisure** and **Rod Mackay Yacht Brokerage**, will be awarded to the yachts scoring best in each Division Pointscore, provided a prize winner has started in not less than three (3) races.
- 23.2 Individual entrants are eligible for divisional Pointscore prizes
- 23.3 Prizes will be awarded at the end of the season.

24 Entry

- 24.1 Yachts entered in Pointscore series run by LMYC, RMYCT, WASC and SLMASC are automatic entries in the RK Robertson series.
- 24.2 Casual entries are welcomed upon payment of the casual entry fee of their respective clubs.
- 24.3 Entries shall be submitted to the handicapping committee by the receiving club no later than 1700 hrs on the Thursday before the race entered.

Issued under the authority of;
R.K. Robertson Inter Club Committee.

APPENDIX A1

MARKS NOMINATED IN THE SAILING INSTRUCTIONS ARE:-

RMYCT

TORONTO	Marks are RMYCT permanent marks, being yellow cylindrical marks, approx. 1.5m high x 400mm diameter, and have a <u>WHITE CONE</u> atop.
FIGTREE	
BOUGHTON	
HARTLEY	
CROUDACE BAY	
GREEN POINT	
BELMONT	
MAYO	
CAREY	
RMYCT CLUB MARK	RMYCT finish mark is a yellow permanent cylindrical mark approx. 1.5m high x 400mm diameter with a <u>RED CROWN</u> atop.

WASC

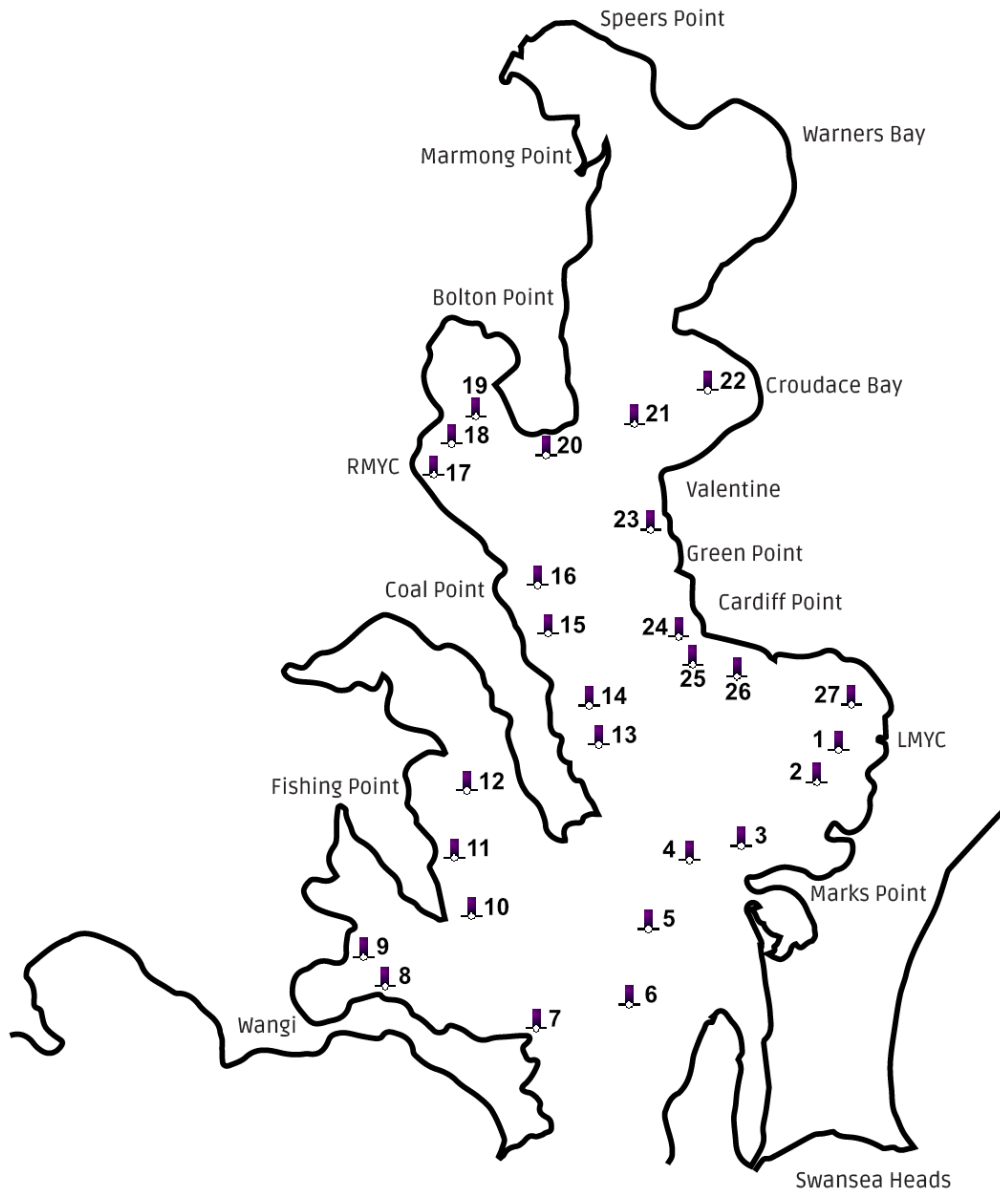
PELICAN	Marks are WASC permanent marks, being thin cylindrical stick marks, lime green in colour approx. 1m high x 250mm diameter with a Black mid girth band.
WANGI POINT	
RATHMINES	
SKYE POINT	
ARCADIA	A temporarily laid yellow inflatable buoy 1.5m high x 1m diameter
WASC CLUB MARK	The mark is a lime green cylinder approx. 1m high x 250mm diameter with a Black mid girth band, moored approx. 300m North West of WASC.

LMYC

LMYC CLUB MARK	Marks are LMYC permanent marks, being lime green cylinders approx. 1.5m high x 400mm diameter, with a Red band and have a <u>YELLOW or LIME GREEN CONE</u> atop.
ANDERSONS	
MARKS POINT	
CHANNEL	
COON ISLAND	
FISHING POINT	
COAL POINT	
CAREY BAY	
CARDIFF POINT	
SLIP	
ALBERT	

Special care should be taken to avoid rounding incorrect marks. A variety of marks will be used in each of the six races.

APPENDIX A2



Mark ID	Name	Club	Mark ID	Name	Club
1	LMYC Club	LMYC	15	Carey Bay	LMYC
2	Andersons	LMYC	16	Carey	RMYCT
3	Marks Point	LMYC	17	RMYCT Club	RMYCT
4	Channel	LMYC	18	Toronto	RMYCT
5	Pelican	WASC	19	Figtree	RMYCT
6	Coon Island	LMYC	20	Boughton	RMYCT
7	Wangi Point	WASC	21	Hartley	RMYCT
8	WASC Club	WASC	22	Croudace Bay	RMYCT
9	Arcadia	WASC	23	Green Point	RMYCT
10	Fishing Point	LMYC	24	Cardiff Point	LMYC
11	Rathmines	WASC	25	Belmont	RMYCT
12	Skye Point	WASC	26	Slip	LMYC
13	Coal Point	LMYC	27	Albert	LMYC
14	Mayo	RMYCT			

APPENDIX A3
WHITE, GREEN and BLUE DIVISIONS COURSES

ATTENTION: - **X LMYC X** – **X WASC X** or **X RMYCT X** - Denotes Finish for Green and Blue Divisions.
Finish LMYC: Finish WASC and Finish RMYCT - Denotes Finish for White Division

LMYC RACES 3 & 6

WASC RACES 2 & 5

RMYCT RACES 1 & 4

COURSE 1 NORTHERLY

LMYC		WASC		RMYCT	
Start near Marks Point		Start near Marks Point		Start near Marks Point	
Cardiff Point	P	Cardiff Point	P	Cardiff Point	P
Coal Point	P	Coal Point	P	Coal Point	P
Channel	P	Channel	P	Channel	P
Coon Island	P	Cardiff Point	P	Cardiff Point	P
Channel	S	Channel	P	Mayo	S
Belmont	S	Wangi Point	S	Broughton	P
Marks Point	S	X WASC X	S	Carey Bay	S
Belmont	S	Skye Point	S	Figtree	P
Andersons	P	Pelican	S	X RMYCT X	P
Albert	S	Finish WASC		Carey	P
X LMYC X	S			Figtree	P
Marks Point	S			Finish RMYCT	
Belmont	S				
Albert	S				
Finish LMYC					

COURSE 2 NORTH EAST

LMYC		WASC		RMYCT	
Start near Coal Point		Start South of Coal Point		Start near Coal Point	
LMYC	S	Andersons	P	LMYC	P
Andersons	S	Arcadia	P	Carey Bay	S
Channel	P	Channel	S	Green Point	P
Fishing Point	S	Wangi Point	S	Toronto	S
Channel	S	X WASC X	S	Croudace Bay	P
Andersons	P	Pelican	P	Figtree	P
Coal Point	S	Finish WASC		X RMYCT X	P
Albert	S			Hartley	P
X LMYC X	S			Figtree	P
Coal Point	S			Finish RMYCT	
Albert	S				
Finish LMYC					

COURSE 3 EASTERLY

LMYC		WASC		RMYCT	
Start near Mayo		Start near Mayo		Start near Mayo	
LMYC	S	LMYC	S	LMYC	S
Andersons	S	Andersons	S	Andersons	S
Carey Bay	S	Channel	P	Carey Bay	S
Andersons	S	Rathmines	P	Belmont	P
Carey Bay	S	Pelican	S	Toronto	S
Albert	S	Fishing Point	S	Green Point	P
X LMYC X	S	Pelican	S	Figtree	P
Andersons	S	X WASC X	S	X RMYCT X	P
Mayo	S	Coon Island	P	Green Point	P
Albert	S	Finish WASC		Figtree	P
Finish LMYC				Finish RMYCT	

APPENDIX A3
WHITE, GREEN and BLUE DIVISIONS COURSES

ATTENTION: - **X LMYC X** – **X WASC X** or **X RMYCT X** - Denotes Finish for Green and Blue Divisions.
Finish LMYC: Finish WASC and Finish RMYCT - Denotes Finish for White Division

COURSE 4 SOUTH EAST

LMYC		WASC		RMYCT	
Start near Carey Bay		Start near Carey Bay		Start near Coal Point	
Marks Point	P	Marks Point	S	Channel	P
Carey Bay	P	Coal Point	P	Carey Bay	S
Marks Point	P	Channel	S	Marks Point	P
Cardiff Point	S	Skye Point	P	Toronto	S
Andersons	P	Coon Island	S	Green Point	P
Slip	S	Fishing Point	P	Figtree	P
Albert	S	Wangi Point	S	X RMYCT X	P
X LMYC X	S	X WASC X	S	Mayo	P
Belmont	P	Arcadia	S	Figtree	P
Andersons	P	Coon Island	S	Finish RMYCT	
Albert	S	Finish WASC			
Finish LMYC					

COURSE 5 SOUTH

LMYC		WASC		RMYCT	
Start near Cardiff Point		Start near Cardiff Point		Start near Cardiff Point	
Channel	S	Channel	S	Channel	S
Coal Point	S	Coal Point	P	Coal Point	S
Cardiff Point	S	Channel	P	Cardiff Point	S
Channel	S	Coon Island	S	Channel	S
Coal Point	S	Skye Point	P	Boughton	P
Cardiff Point	S	Wangi Point	S	Carey Bay	S
Marks Point	P	Rathmines	P	Figtree	P
Albert	S	X WASC X	S	X RMYCT X	P
X LMYC X	S	Fishing Point	S	Carey Bay	S
Andersons	S	Wangi Point	S	Figtree	P
Slip	P	Finish WASC		Finish RMYCT	
Marks Point	P				
Albert	S				
Finish LMYC					

COURSE 6 SOUTH WEST

LMYC		WASC		RMYCT	
Start near Belmont Bay		Start near Belmont Bay		Start near Belmont Bay	
Channel	P	Channel	P	Channel	P
Fishing Point	P	Fishing Point	P	Fishing Point	P
Channel	S	Channel	S	Channel	S
Andersons	S	Arcadia	P	LMYC	S
Channel	S	Coon Island	S	Channel	S
Slip	P	X WASC X	S	Hartley	P
Coal Point	P	Coon Island	S	Figtree	P
Albert	S	Finish WASC		X RMYCT X	P
X LMYC X	S			Hartley	P
Channel	S			Figtree	P
Albert	S			Finish RMYCT	
Finish LMYC					

WHITE, GREEN and BLUE DIVISIONS COURSES

ATTENTION: - **X LMYC X – X WASC X** or **X RMYCT X** - Denotes Finish for Green and Blue Divisions.
Finish LMYC: Finish WASC and Finish RMYCT - Denotes Finish for White Division

COURSE 7 WEST

LMYC		WASC		RMYCT	
Start near LMYC		Start near LMYC		Start near LMYC	
Mayo	P	Coal Point	P	Mayo	P
LMYC	S	Marks Point	S	LMYC	S
Coal Point	S	Rathmines	P	Coal Point	S
Slip	S	Channel	S	Slip	P
Andersons	S	Fishing Point	P	Carey Bay	S
Mayo	S	Coon Island	S	Hartley	P
Albert	S	X WASC X	S	Figtree	P
X LMYC X	S	Coon Island	S	X RMYCT X	P
Mayo	S	Finish WASC		Green Point	P
Albert	S			Figtree	P
Finish LMYC				Finish RMYCT	

COURSE 8 NORTH WEST

LMYC		WASC		RMYCT	
Start near Marks Point		Start near Marks Point		Start near Marks Point	
Carey Bay	S	Carey Bay	S	Carey Bay	S
Andersons	S	Cardiff Point	S	Belmont	P
Belmont	P	Pelican	S	Toronto	P
Marks Point	S	Rathmines	P	Carey Bay	P
Carey Bay	S	Wangi Point	S	Belmont	P
Albert	S	Fishing Point	P	Figtree	P
X LMYC X	S	X WASC X	S	X RMYCT X	P
Andersons	S	Coon Island	P	Cardiff Point	P
Cardiff Point	S	Fishing Point	P	Figtree	P
Albert	S	Finish WASC		Finish RMYCT	
Finish LMYC					