



Single handed Dinghy Regatta
Organised and hosted by
South Lake Macquarie Amateur Sailing Club Inc.
www.slmasc.org



November 4th & 5th 2017

Sailing Instructions

1. Rules

- 1.1** The regatta will be governed by the rules as defined in The Racing Rules of Sailing (RRS).
- 1.2** Australian Sailing Special Regulations Part 2 Off the Beach Boats. Section 5.01 Personal Flotation Devices will apply. It is the responsibility of all competitors to ensure that the personal flotation device complies with a standard equivalent to those listed in the regulation.
- 1.3** The sailing Instructions shall take precedence over the Notice of Race. This changes RRS 63.7

2. Notice to Competitors

Notice to competitors will be posted on the official notice board located within the club house.

3. Changes in Sailing Instructions

Changes to the Sailing Instructions will be posted before 1000hrs on the day it will take effect except that any change to the race schedule of races will be posted by 2000hrs on the day before it will take effect.

4. Signals Made Ashore

- 4.1** Signals made ashore will be displayed from the flag mast at SLMASC.
- 4.2** When code flag AP is displayed ashore, "one minute" is replaced with "not less than 30 minutes" in race signal AP. This changes Race signal AP.

5. Schedule

Saturday 4 th November	Registration	0900-1130hrs
Saturday 4 th November	Briefing	1130hrs
Saturday 4 th November	Racing from	1300hrs
Sunday 5 th November	Racing from	1000hrs

- 5.1** A maximum of eight (8) races.
- 5.2** There will be a period of approximately one minute between the start of a division and the warning signal for the following division.
- 5.3** Re-sails will be at the discretion of the organising authority as required. No warning signal will be made after 1530hrs Sunday 5th November.
- 5.4** Each class will be assigned a division at the discretion of the organising authority based on performance and number of starters. Divisions will be announced at the briefing and will be indicated on water by a corresponding numeral pennant as their division warning flag.

6. Race Area

The race area will be on the waters of South Lake Macquarie and will be indicated at the briefing on Saturday 4th November.

7. Courses

- 7.1** Competitors will be notified of their division and race course area (Alpha or Bravo) at briefing.
- 7.2** "Attachment A" shows course diagrams of Alpha and Bravo courses designations, the order in which marks are to be passed and the side on which each mark is to be left.
- 7.3** No Later than the warning signal of that division, the Start Race Committee boat will display that divisions course designation as course code in "Attachment A".
- 7.4** The approximate target time is 35 minutes, elapsed time greater or less than the target time will not be grounds for redress.

8. The Start

- 8.1** All races will be started using RRS 26.
- 8.2** The start line will be between the race committee boat displaying an orange flag at the **starboard-end** and the course port-end starting mark as indicated in "Attachment A".
- 8.3** A boat starting more than four minutes after her division starting signal will be scored DNS without hearing. This changes rule RRS A4 and A5.
- 8.4** Boats whose warning signal has not been made shall avoid the starting area however it is not grounds for protest by a competitor.

9. The Finish

- 9.1** The finish line will be between a staff mast on the race committee boat displaying a blue flag at the port end and the nearby starboard end finishing mark as indicated in "Attachment A".
- 9.2** After a vessel has finished it will keep clear of the finish line to give all competitors their best chance of finishing. Failure to observe this requirement may result in the competitor being awarded a penalty, without hearing, up to and including disqualification from the race during or immediately after which the incident occurred, however this is not grounds for protest by a competitor.

10. Penalties at time of incident

For all Nacra, Moth and Waspz Classes, RRS 44.1 and RRS P2.1 are changed so that Two-Turn Penalty is replaced with One-Turn Penalty.

11. Time Limit

- 11.1** The courses to be sailed will be integrative to "Attachment A" with a target winning time of 35 minutes elapsed.
- 11.2** Boats failing to finish within 10 minutes of the first boat of their division will be scored DNF. This changes RRS 35 and 44.1 and A5.

12. Shortening Course after the Start

The course may be shortened at a rounding mark or gate for specific divisions by displaying "flag S" along with the relevant "division flag/s" with two sound signals. If no division flags are displayed then the shortened course applies to all divisions. This changes rule RRS 32.2

13. Protests

- 13.1** Protests forms are available from the club's Race Control Centre. Protests shall be delivered there within 60 minutes after the last boat in their division has finished the last race of that day.
- 13.2** Notices will be posted within 30 minutes of the protest time limit to inform competitors of the hearing in which they are parties or named as witnesses. Hearings will be held in the Race Control Centre.

14. Scoring

14.1 The low point score system of RRS Appendix A will apply.

- a) One race is required to be completed to constitute a series.
- b) When fewer than three races have been completed, a boat's series score will be the total of her race scores.
- c) When from four or more races have been completed, a boat's series score will be the total of her race scores excluding worst score.

15. Safety Regulation, Signing on and Signing Off

15.1 Competitors shall sign on before leaving shore each day and sign off before the end of protest time.

15.2 Failure to sign on or off may result in the competitor being awarded a penalty, without hearing, up to and including disqualification from all races on the day in question. However this is not grounds for protest by a competitor.

15.3 Boats not leaving the beach for scheduled racing shall promptly notify the Race Officer.

15.4 Boats withdrawing from a race shall promptly notify a Race Officer on a Race Committee boat and also notify of their intentions regarding starting further races or returning to shore.

15.5 Competitors shall wear a floatation device at all times while afloat, except briefly while changing or adjusting clothing or personal equipment.

15.6 When a Race Committee boat displays code flag "V" with repetitive sounds, all official and support boats on the relevant course area shall monitor the relevant Race committee radio channel for search and rescue instructions.

16. Disclaimer of Liability

16.1 All those taking part in this regatta do so at their own risk and responsibility.

16.2 Attention is drawn to RRS Fundamental Rule 4 Decision to Race, "A boat is solely responsible for deciding whether or not to start or to continue racing".

16.3 Australian Sailing, South Lake Macquarie Amateur Sailing Club, their officers and regatta officials, volunteers and sponsors do not accept any liability for material damage or personal injury or death sustained in conjunction with or prior, during or after the regatta.

17. Insurance

Each participating boat shall be insured with valid third party liability insurance with a minimum cover of not less than AUD\$1,000,000 (recommended AUD\$5,000,000).

18. Prizes

18.1 Prizes will be awarded at the discretion of the organising authority.

The logo for Zhik, featuring the word "zhik" in a bold, lowercase, sans-serif font. The letter 'z' is particularly stylized with a long, sweeping tail that extends to the left. A registered trademark symbol (®) is located to the right of the word.

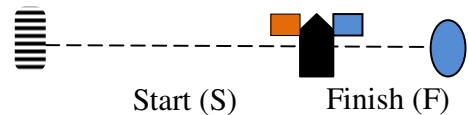
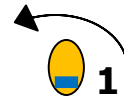
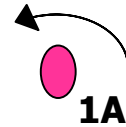


"ALPHA" - ATTACHMENT A



Mark	ALPHA COURSE Mark Descriptions
Start Mark	RC Boat displaying orange flag
Start Pin	White with black bands inflatable cylindrical tube
1, 2 & 3	Yellow inflatable cylinder with bottom blue band
5 & 4	Yellow inflatable
1A	Pink inflatable cylinder
Finish Mark	RC Boat displaying blue flag
Finish Pin	Blue inflatable cylinder

Course Code	Course to be Sailed
O-1	S - 1 - 2 - 3 - 4 - F
O-2	S - 1 - 2 - 3 - 2 - 3 - 4 - F
O-3	S - 1 - 2 - 3 - 2 - 3 - 2 - 3 - 4 - F
I-1	S - 1A - 2 - 3 - 4 - F
I-2	S - 1A - 5s/p - 1A - 2 - 3 - 4 - F
I-3	S - 1A - 5s/p - 1A - 5s/p - 1A - 2 - 3 - 4 - F





"BRAVO" - ATTACHMENT A



Mark	BRAVO COURSE Mark Descriptions
Start Mark	RC Boat displaying orange flag
Start Pin	White inflatable cylindrical
1, 2, 3 & 4	Red inflatable cylindrical
Finish Mark	RC Boat displaying blue flag
Finish Pin	Blue inflatable cylinder

Course Code	Course to be Sailed
O-1	S - 1 - 2 - 3 - F
O-2	S - 1 - 2 - 3 - 2 - 3 - F
O-3	S - 1 - 2 - 3 - 2 - 3 - 2 - 3 - F
I-2	S - 1 - 4 - 1 - 2 - 3 - F
I-3	S - 1 - 4 - 1 - 4 - 1 - 2 - 3 - F

